



PRODUCT RANGE

FIRST BASE PRODUCT RANGE

The FIRST BASE PRO-Series is developed for heavier load bearing capacities. Produced in accordance with EN-1090-2 standards and hot dip galvanised, the PRO-type ensures you extreme stability, with the extra benefit of easy (and quick!) installation in every kind of soil. The perfect solution for temporary as well as permanent constructions. Available in both extendable and fixed lengths.

YOUR BENEFITS:

- › Reusable and recyclable; circular foundation
- › No concrete needed; no drying time
- › No heavy machinery needed; no damage to the environment
- › No maintenance; long lifespan
- › Quickly installed; even in winter

www.firstbasegroundscraws.com

INDEX

› FIXED FLANGE	04
› EXTENDABLE	08
› G3 MODEL	18
› ACCESSORIES	21
› RIM MODEL	22
› MACHINES	24
› TEST EQUIPMENT	30

LOOK AT THE
PRODUCT RANGE
ONLINE



Ø76 FIXED FLANGE

FIXED FLANGE

This ground screw type can be used for a large number of applications. The flange plate on the Ø76 screw foundations has a thickness of 8 mm and a diameter of 200 mm. The flange plate on the Ø89 and Ø114 screw foundations has a thickness of 12 mm and a diameter of 220 mm.

Both flange plates have wide slotted holes in various directions. In addition, a central nut is also welded in. Suitable as a foundation for garden rooms, roofs and verandas, log cabins, sheds, bridges, carports, halls and container constructions, modular homes, conservatory constructions and more.



SCREW Ø76
x 1050 mm



SCREW Ø76
x 1250 mm



SCREW Ø76
x 1550 mm



SCREW Ø76
x 2050 mm

Ø89 FIXED FLANGE



SCREW Ø89
x 2050 mm



SCREW Ø89
x 2550 mm



SCREW Ø89
x 3050 mm

Ø114 FIXED FLANGE



SCREW Ø114
x 2050 mm



SCREW Ø114
x 2550 mm



SCREW Ø114
x 3050 mm

Ø76 EXTENDABLE – SCREW TIPS

EXTENDABLE

Extendable ground screws are suitable for all soil types. When a ground screw with a fixed length does not provide sufficient security, or when the load-bearing strata is at too great of a depth, an extendable ground screw from FIRST BASE can be used. Due to the large number of different diameters and lengths of screws and extension parts, the maximum load capacity can be achieved in every situation.

Extendable screw foundations are easy to transport and store. The diameters 89 mm and 114 mm screw foundations have a larger wall thickness (5.6 mm) which guarantees a longer lifespan. A ground screw in diameter 76 mm can be installed with our electrical machines. We recommend our hydraulic machines for larger diameters.



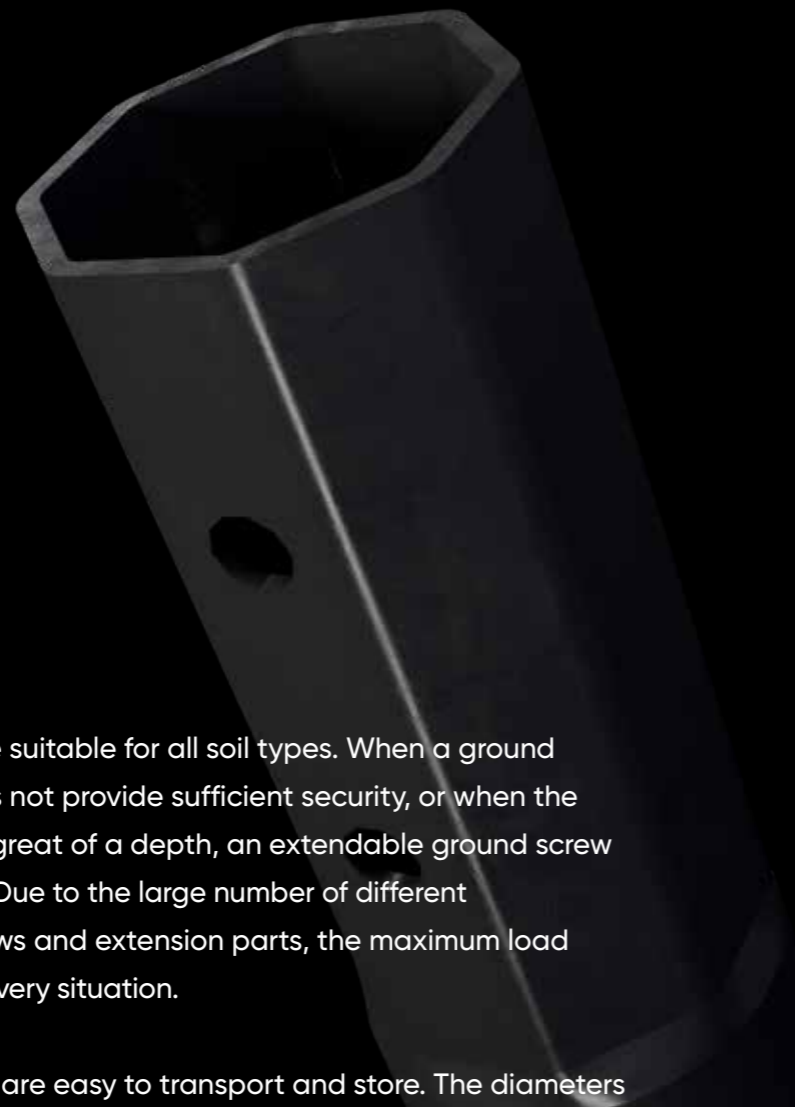
SCREW Ø76
x 800 mm



SCREW Ø76
x 1250 mm



SCREW Ø76
x 2000 mm



Ø76 EXTENDABLE – EXTENSION



EXTENSION Ø76
x 500 mm

EXTENSION Ø76
x 1000 mm

EXTENSION Ø76
x 1500 mm

EXTENSION Ø76
x 2000 mm

Ø76 EXTENDABLE – FLANGES



FLANGE Ø76
8 x 200 mm M16



FLANGE Ø76
8 x 80 mm M16

Ø89 EXTENDABLE - SCREW TIPS



SCREW Ø89
x 1200 mm



SCREW Ø89
x 2100 mm

Ø89 EXTENDABLE - EXTENSIONS



EXTENSION Ø89
x 500 mm



EXTENSION Ø89
x 1000 mm



EXTENSION Ø89
x 1500 mm



EXTENSION Ø89
x 2000 mm

Ø89 EXTENDABLE - FLANGE



FLANGE Ø89
12 x 220 mm M24

Ø114 EXTENDABLE - SCREW TIPS



SCREW Ø114
x 1200 mm



SCREW Ø114
x 1600 mm



SCREW Ø114
x 2100 mm

Ø114 EXTENDABLE - EXTENSIONS



EXTENSION Ø114
x 500 mm



EXTENSION Ø114
x 1000 mm



EXTENSION Ø114
x 1500 mm



EXTENSION Ø114
x 2000 mm

Ø114 EXTENDABLE - FLANGE



FLANGE Ø114
12 x 220 mm M24

G3 MODEL

This open ground screw model has been developed for masts, posts, fencing, pipes, etc. The top of the foundation is fitted with 3 M16 nuts. This allows any application to be fixed quickly and stably. Available in diameters 76 mm and 89 mm.



SCREW G3
Ø76 x 800 mm

SCREW G3
Ø76 x 1050 mm

SCREW G3
Ø76 x 1250 mm

SCREW G3
Ø76 x 1550 mm

SCREW G3
Ø76 x 2050 mm

Ø89 G3 MODEL



SCREW G3
Ø89 x 800 mm



SCREW G3
Ø89 x 1050 mm



SCREW G3
Ø89 x 1250 mm



SCREW G3
Ø89 x 1550 mm

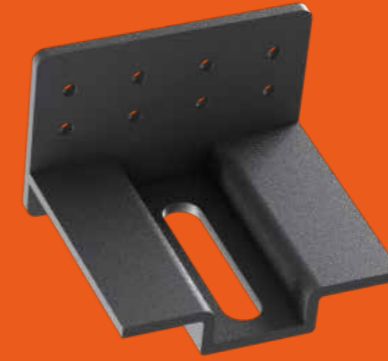


SCREW G3
Ø89 x 2050 mm

ACCESSORIES



L-BRACKET M16
180 x 202 x 80 mm



L-BRACKET M16
120 x 80 x 105 mm



POST HOLDER M20

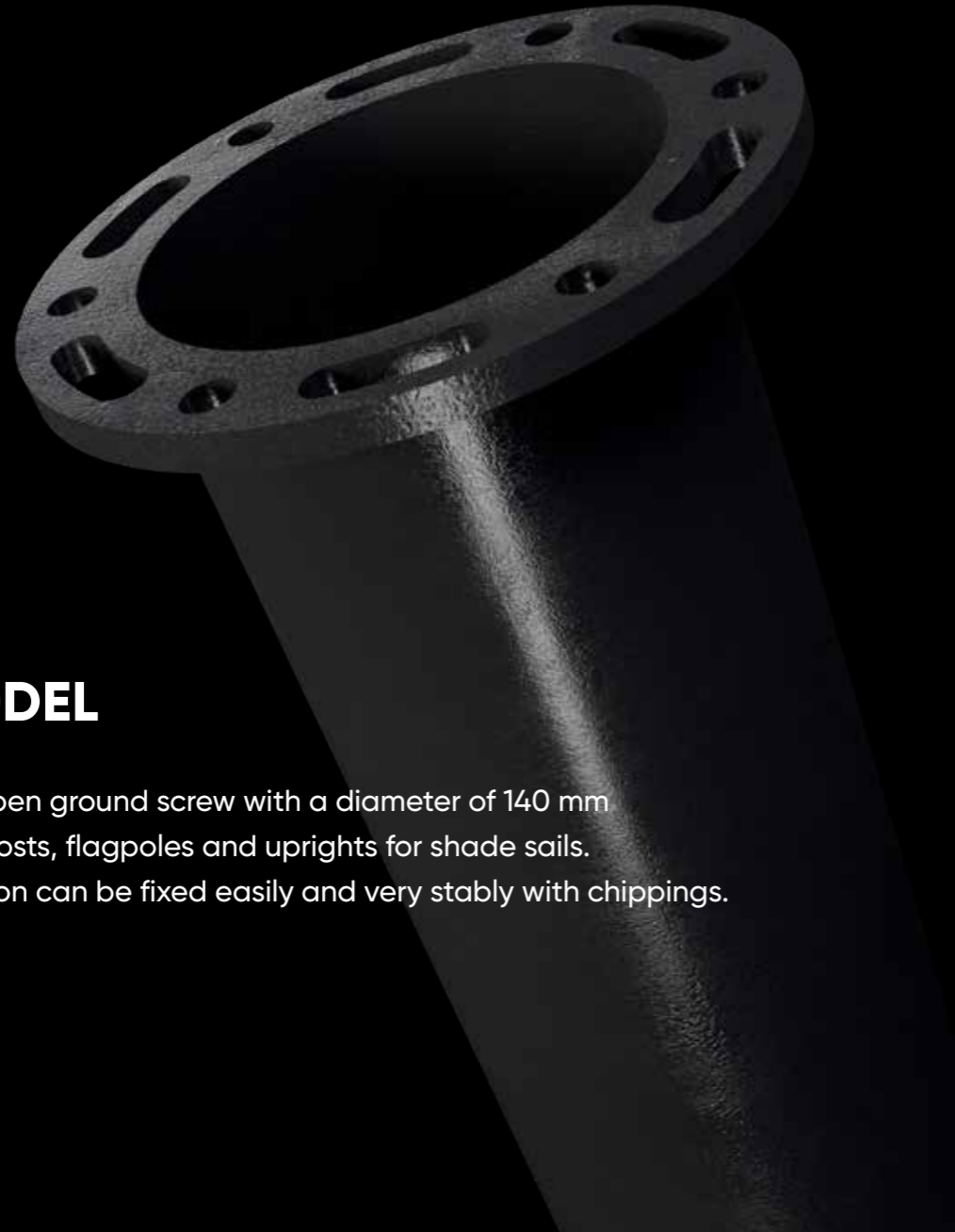


HE140 A/B STEEL BEAMS

RIM MODEL

RIM MODEL

We offer an open ground screw with a diameter of 140 mm for installing posts, flagpoles and uprights for shade sails. Your application can be fixed easily and very stably with chippings.



RIM MODEL Ø89
140 x 1300 mm



RIM MODEL Ø89
140 x 1600 mm



RIM MODEL Ø89
140 x 2100 mm

**FIRST
BASE**



ELECTRIC GROUND SCREW DRIVING MACHINE XS 2.5

Electrically powered machine for mounting ground screws in hard-to-reach places. Very easy to operate. With a max. torque of 3.000 Nm, this machine can mount ground screws with a length of up to 1250 mm.



ELECTRIC GROUND SCREW DRIVING MACHINE XE 5.0

Powered machine for mounting ground screws in hard-to-reach places. Very easy to operate. With a max. torque of 5.000 Nm, this machine can mount ground screws with a length of up to 2 meters in average soil types.



**FIRST
BYSE**

TORQUE
UP TO 12.000 NM



HYDRAULIC GROUND SCREW DRIVING MACHINE MODEL 800

Hydraulically driven machine for mounting large numbers of ground screws.
With a max. torque of 12.000 Nm this machine can mount ground screws with
a very large load bearing capacity.



TEST EQUIPMENT

With the compact DP100 tensile test set-up, a vertical dynamic pile load test can be performed quickly and accurately. With a maximum vertical tensile load capacity of 100kN, the larger FIRST BASE pile diameters such as the V89, V114 can be rated for load capacity.

The DP100 is built according to EN-1090-2 and CE certified. All parts have been 3D analyzed for strength, stiffness and metal fatigue. The DP100 is supplied with all associated couplings and adapters. Data can be obtained in analogue or digital format.



**FIRST
BASE**
GROUND SCREWS



www.firstbasegroundscrews.com